





Welcome to Monarch Education Furniture

For over 30 years we've been carving out a unique spot in the education furniture industry, with warm customer service and fantastic lead times that you won't find anywhere else. In our 96,000 square foot purpose-built factory in Nottingham, we manufacture a wide range of stock units and undertake bespoke projects to meet the complex needs of the education, healthcare, and public sector markets.

Our customers are always at the heart of our business and our dedication and commitment to service and support is the reason we are recognised as a leader in our field.



We are a registered ISO 14001:2004 Approved Environmental management systems company.



Operating at a very high level of performance, demonstrating well developed occupational health and safety management systems and culture, outstanding control of risk and very low levels of error, harm and loss.



We are a registered ISO 9001:2008 Approved Quality management systems company.



Monarch Education Furniture is an official member of the British Education Suppliers Association (BESA). BESA is a trade association who work on behalf of their members to support UK-based companies that supply goods and services to the education sector.

Follow us on our journey...



#teammonarch
#educationalfurniture
#mymonarchtray
#monarchtray

Environmentally Friendly

Did you know?

Our certified FSC MFC is manufactured in Chirk, Wales. 85% of the boards are recycled timber (a mix of hardwood & softwood coming from old furniture, pallets, cable reels).

The recycled content comes from the UK & the 20% non-recycled material is spruce/pine which is also grown in the UK. For every tree felled - two trees are planted.

Once our furniture reaches the end of its lifetime, around 97.5% of the unit can be recycled.

Factory

LED lighting in the factory and offices are each fitted with an individual PIR sensor so that they are only on when someone is active in that area. The dust extraction system is fully enclosed which returns the filtered air back into the factory to reduce heat loss.

Excess material from units damaged in transit will be returned to the factory for possible reuse. All cardboard, paper and plastic are compacted and recycled with a local recycler. All metal is separated and recycled locally and our supplier of degreasing chemicals is also licensed to collect our chemical waste. We are a registered waste carrier.

Our Biomass boiler can burn up to 5 tonnes...

of waste wood per week greatly reducing the amount of waste that is sent for recycling. The heat generated is piped to into our factory.



We are a registered
ISO 14001:2004
Approved Environmental
management systems company.

Quality

We offer exceptional build quality, hand finished and functionally safe for use within the rigours of a busy learning environment. We use high quality materials and components to ensure each unit is robust, rigid and sturdy. Each unit is constructed using 18mm FSC certified MFC, 2mm thick ABS edging and fitted together by cam and dowel construction.

We manufacture our metal range using 25 x 25mm ERW steel tube, fully welded with an epoxy powder coated finish.



Warranty & Safety

All of our products are hand built in the UK and are independently tested by FIRA to BS EN 16121:2013 Level 2 British Standard and EU equivalent in respect of strength, durability and stability. Complete with a 5-year warranty.



Unwrap & Check Service™

With our famous Unwrap & Check Service™ our driver will deliver your order to a nominated ground level reception point. All items are unpacked by our driver and checked by the customer for damages. All packaging is taken away by driver which is then recycled by our factory.



Sales Team

Our customers are always at the heart of our business and our dedication and commitment to service and support is the reason we are recognised as a leader in our field.

Contact our friendly team:
Tel: 0115 982 1771
Email: sales@monarchuk.com



We are a registered ISO 9001:2008 Approved Quality management systems company.

Introducing the NEW Monarch Tray™ range

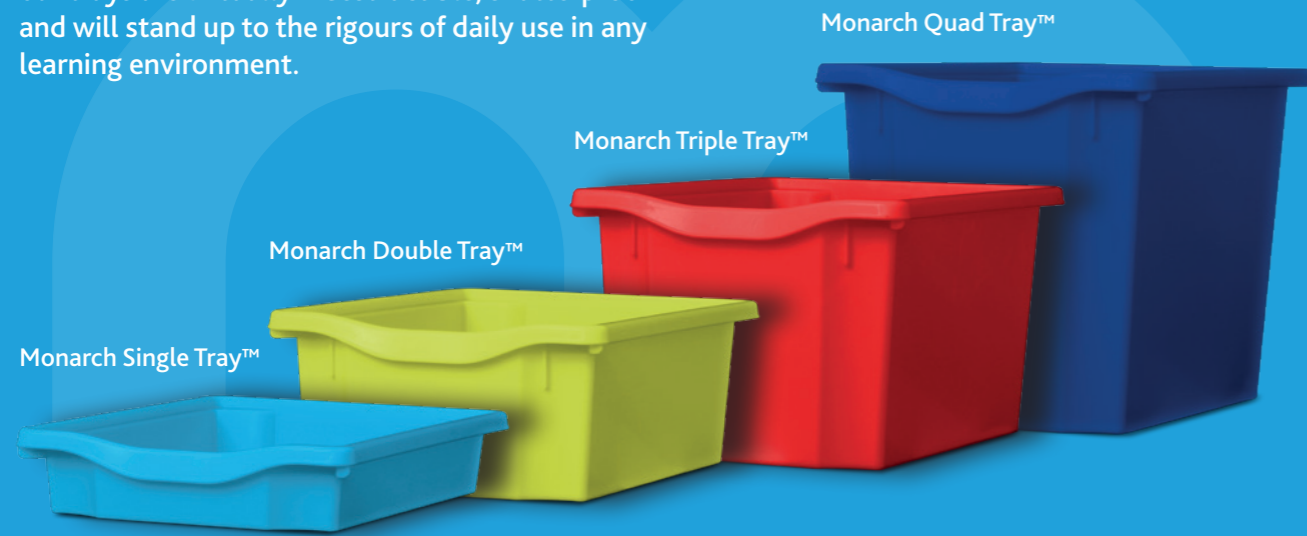
Our fantastic new range of trays have been truly designed for the 21st century!

Create inspiring learning environments with our trays - available in four different sizes and over 20 industry standard colours. You can be sure that we have something to suit your requirements.

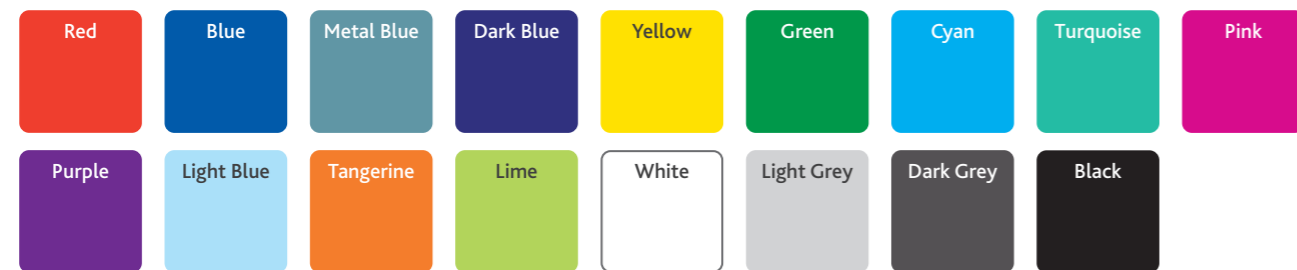
Manufactured in the UK from 100% polypropylene, our trays are virtually indestructible, shatterproof and will stand up to the rigours of daily use in any learning environment.

The Monarch Tray™ range will fit all standard school furniture so upgrading to our trays will be as easy as 123.

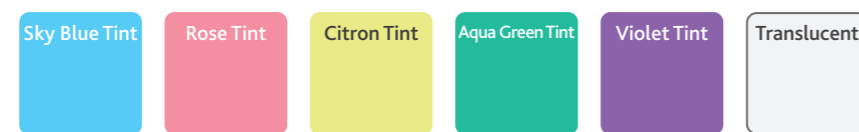
Our trays are manufactured to last but at end of life they can easily be recycled.



Monarch Tray™ Classic Solid Colours



Monarch Tray™ Classic Translucent & Tints



Colour chart disclaimer: We have made every effort to make the colours on this document as close as possible to the ones you will receive.

Monarch Tray™ Features



Subtle rounding of corners creates a softer feel and touch.



Re-enforced side rib for extra strength.

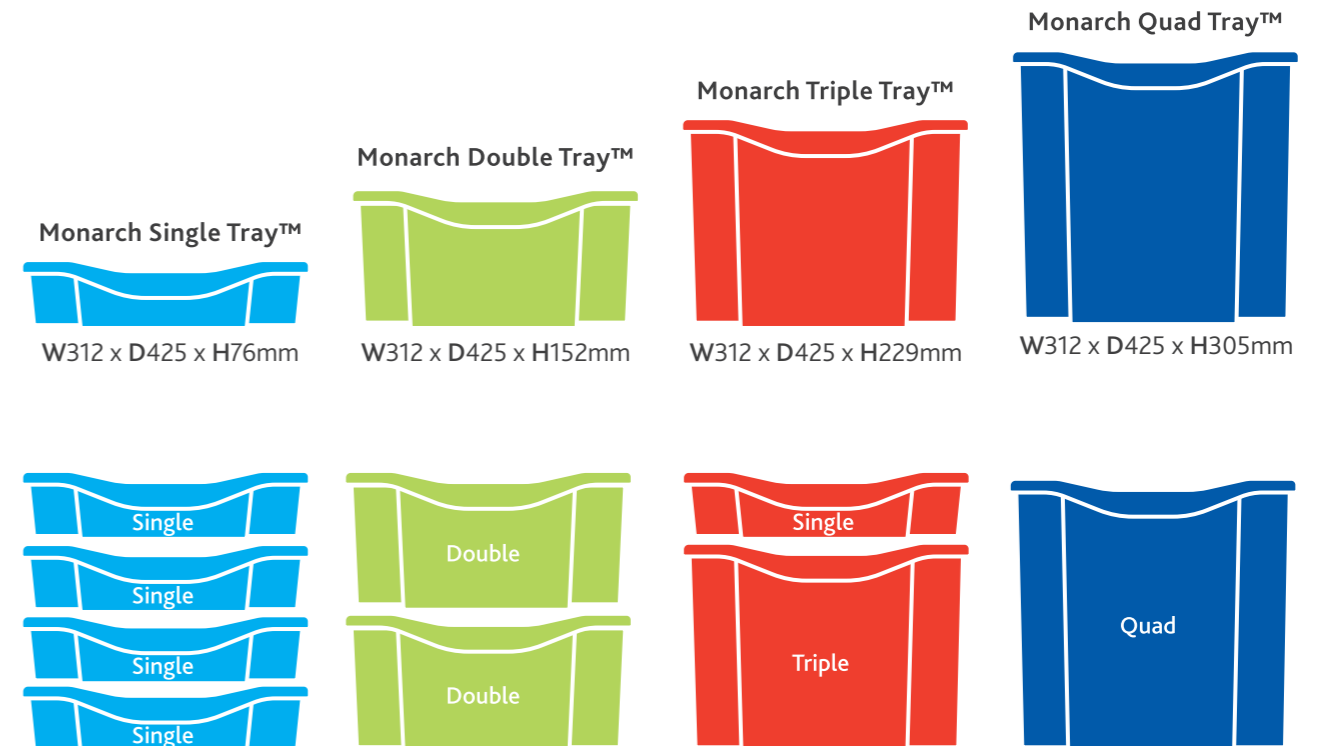


Scooped out base gives extra strength and stability.



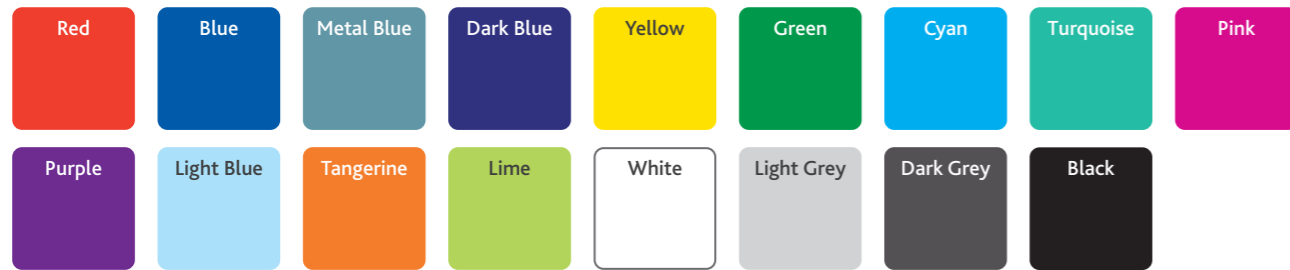
The Monarch Tray Lid™ fits perfectly onto the top of the tray.

Monarch Tray™ Sizes

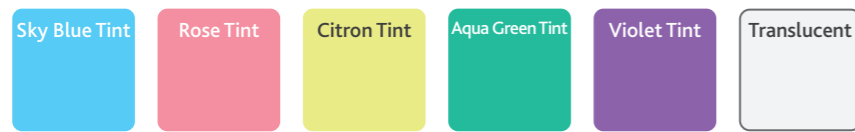


Monarch Single Tray™, Monarch Double Tray™, Monarch Triple Tray™, Monarch Quad Tray™, Monarch Tray Lid™, Monarch Runner™ are all Trademarks™ of Monarch Education furniture.

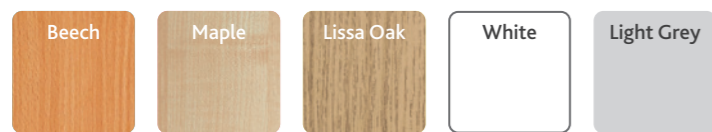
Monarch Tray™ Classic Solid Colours



Monarch Tray™ Classic Translucent & Tints



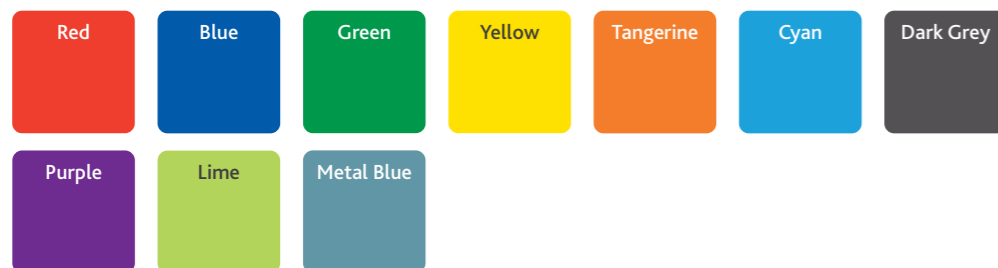
Wood Finish



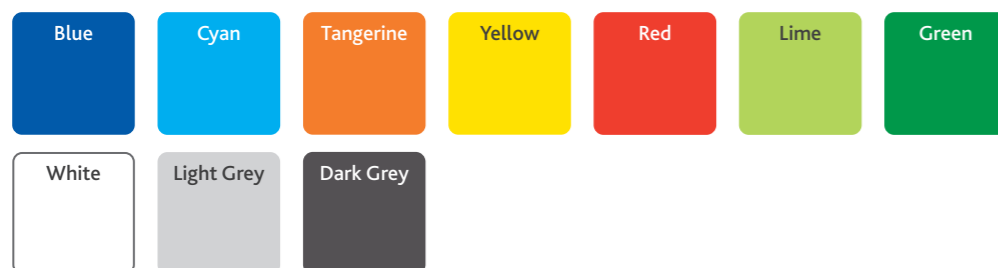
Bubblegum™ Panel Finish



Coloured Edge Finish



Metal Finish



Colour chart disclaimer: We have made every effort to make the colours on this document as close as possible to the ones you will receive.

12-13	Single Tray Storage
14 -15	Double, Triple, Quad and Combination Tray Storage
16 - 17	Bubblegum™ Tray Storage
18 - 23	Coloured Edge Tray Storage
24 - 25	The White Range Tray Storage
26 -33	Monarch Premium™ Tray Storage
34 - 35	Allsorts Stackable™ Storage
36	Allsorts™ Storage
37	Tray Cupboard Storage
38 - 39	Classroom Metal Storage
40 - 43	Prep-Room Science & Technology Storage
44 - 45	Medical Storage



Manufactured from 18mm FSC certified MFC beech with 2mm ABS edging. Tray units are supplied with corresponding trays and strong non-marking shatterproof nylon castors (two with locking facility). Each with a load capacity of 20kg. Hand built to BS EN 16121:2013 Level 2 British Standard and EU equivalent in respect of strength, durability and stability. Complete with a 5-year warranty.



A 4 Single Tray Unit

Dimensions: W445 x D453 x H445mm
MEQ4H
MAP4H

BEECH
 MAPLE



B 6 Single Tray Unit

Dimensions: W360 x D453 x H617mm
MEQ1W
MAP1W

BEECH
 MAPLE



C 8 Single Tray Unit

Dimensions: W360 x D453 x H789mm
MEQ8H
MAP8H

BEECH
 MAPLE



D 8 Single Tray Unit

Dimensions: W700 x D453 x HXXXmm
MEQ8W
MAP8W

BEECH
 MAPLE



E 12 Single Tray Unit

Dimensions: W700 x D453 x H617mm
MEQ2W
MAP2W

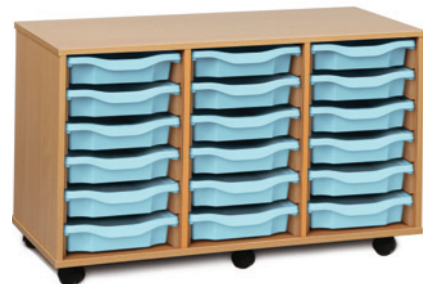
BEECH
 MAPLE



F 16 Single Tray Unit

Dimensions: W700 x D453 x H789mm
MEQ16
MAP16

BEECH
 MAPLE



G 18 Single Tray Unit

Dimensions: W1030 x D453 x H617mm
MEQ3W
MAP3W

BEECH
 MAPLE



H 20 Single Tray Unit

Dimensions: W1358 x D462 x H531mm
MEQ20W
MAP20W

BEECH
 MAPLE



I 21 Single Tray Unit

Dimensions: W1030 x D453 x H703mm
MEQ21
MAP21

BEECH
 MAPLE



J 24 Single Tray Unit

Dimensions: W1030 x D453 x H789mm
MEQ4W
MAP4W

BEECH
 MAPLE



K 24 Single Tray Unit

Dimensions: W1358 x D462 x H617mm
MEQ24W
MAP24W

BEECH
 MAPLE



L 28 Single Tray Unit

Dimensions: W1358 x D462 x H703mm
MEQ28W
MAP28W

BEECH
 MAPLE



M 30 Single Tray Unit

Dimensions: W1030 x D453 x H979mm
MEQ30
MAP30

BEECH
 MAPLE



N 32 Single Tray Unit

Dimensions: W1358 x D462 x H789mm
MEQ32W
MAP32W

BEECH
 MAPLE



O 40 Single Tray Unit

Dimensions: W1358 x D462 x H961mm
MEQ40W
MAP40W

BEECH
 MAPLE



P 48 Single Tray Unit

Dimensions: W1358 x D462 x H1133mm
MEQ48W
MAP48W

BEECH
 MAPLE



Q 64 Single Tray Unit

Dimensions: W1358 x D462 x H1477mm
MEQ64W
MAP64W

BEECH
 MAPLE



R 6 Single Tray Unit with 2 Adjustable Shelves

Dimensions: W1030 x D453 x H617mm
MEQ6/2S
MAP6/2S

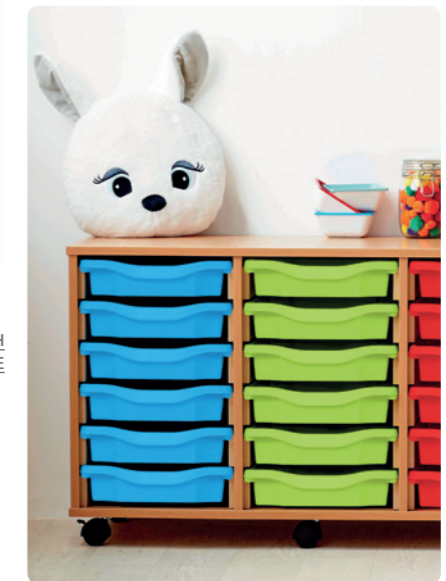
BEECH
 MAPLE



S 8 Single Tray Unit with 2 Adjustable Shelves

Dimensions: W1030 x D453 x H789mm
MEQ8/2S
MAP8/2S

BEECH
 MAPLE



Wood Finish





A 12 Double Tray Unit (Vertical)
 Dimensions: W1030 x D453 x H835mm
 MEQ4020NL
 MAP4020NL

BEECH
 MAPLE



B 12 Double Tray Unit (Horizontal)
 Dimensions: W1358 x D453 x H707mm
 MEQ4012NL
 MAP4012NL

BEECH
 MAPLE



C 16 Double Tray Unit
 Dimensions: W1358 x D453 x H835mm
 MEQ4016NL
 MAP4016NL

BEECH
 MAPLE



M 12 Quad Tray Unit
 Dimensions: W1358 x D453 x H1067mm
 MEQ1015
 MAP1015

BEECH
 MAPLE



N 8 Combination Tray Unit
 Dimensions: W700 x D453 x H967mm
 MEQ1108
 MAP1108

BEECH
 MAPLE



O 12 Combination Tray Unit (Vertical)
 Dimensions: W1030 x D453 x H967mm
 MEQ1112
 MAP1112

BEECH
 MAPLE



D 18 Double Tray Unit
 Dimensions: W1030 x D453 x H1210mm
 MEQ4018NL
 MAP4018NL

BEECH
 MAPLE



E 6 Triple Tray Unit
 Dimensions: W685 x D453 x H857mm
 MEQ3106
 MAP3106

BEECH
 MAPLE



F 12 Triple Tray Unit
 Dimensions: W1342 x D453 x H857mm
 MEQ3112
 MAP3112

BEECH
 MAPLE



P 12 Combination Tray Unit (Horizontal)
 Dimensions: W1358 x D453 x H707mm
 MEQ1031
 MAP1031

BEECH
 MAPLE



Q 16 Combination Tray Unit
 Dimensions: W1358 x D453 x H967mm
 MEQ1116
 MAP1116

BEECH
 MAPLE



R 24 Single / 12 Double Combination Tray Unit
 Dimensions: W1358 x D453 x H707mm
 MEQ4012
 MAP4012

BEECH
 MAPLE



G 16 Triple Tray Unit
 Dimensions: W1342 x D453 x H1115mm
 MEQ3116
 MAP3116

BEECH
 MAPLE



H 4 Quad Tray Unit
 Dimensions: W700 x D453 x H739mm
 MEQ04J
 MAP04J

BEECH
 MAPLE



I 6 Quad Tray Unit (Horizontal)
 Dimensions: W1030 x D453 x H739mm
 MEQ1062
 MAP1062

BEECH
 MAPLE



S 32 Single / 16 Double Combination Tray Unit
 Dimensions: W1358 x D453 x H835mm
 MEQ4016
 MAP4016

BEECH
 MAPLE



T 36 Single / 18 Double Combination Tray Unit
 Dimensions: W1030 x D453 x H1210mm
 MEQ4018
 MAP4018

BEECH
 MAPLE



U 8 Double & 6 Triple Tray Unit
 Dimensions: W1358 x D453 x H842mm
 MEQ5030
 MAP5030

BEECH
 MAPLE



V 16 Single, 4 Double & 3 Triple Tray Unit
 Dimensions: W1358 x D453 x H842mm
 MEQ5020
 MAP5020

BEECH
 MAPLE



W 16 Single & 8 Triple Tray Unit
 Dimensions: W1358 x D453 x H842mm
 MEQ5040
 MAP5040

BEECH
 MAPLE



X 12 Single & Triple Tray Unit
 Dimensions: W1358 x D453 x H617mm
 MEQ4009
 MAP4009

BEECH
 MAPLE



J 8 Quad Tray Unit
 Dimensions: W1342 x D453 x H739mm
 MEQ1021
 MAP1021

BEECH
 MAPLE



K 6 Quad Tray Unit (Vertical)
 Dimensions: W685 x D453 x H1067mm
 MEQ1011
 MAP1011

BEECH
 MAPLE

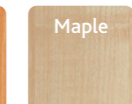


L 9 Quad Tray Unit
 Dimensions: W1030 x D453 x H1067mm
 MEQ1061
 MAP1061

BEECH
 MAPLE



Wood Finish





The Bubblegum™ range brings a splash of colour to the classroom. Manufactured from 18mm FSC certified MFC maple with either a cyan, tangerine, lime or raspberry panel with 2mm ABS edging. Hand built to BS EN 16121:2013 Level 2 British Standard and EU equivalent in respect of strength, durability and stability.



A 6 Single Tray Unit
Dimensions: W360 x D453 x H617mm
MAP1W CYAN MAPLE
MAP1W RASP MAPLE
MAP1W LIME MAPLE
MAP1W TANG MAPLE



B 12 Single Tray Unit
Dimensions: W700 x D453 x H617mm
MAP2W CYAN MAPLE
MAP2W RASP MAPLE
MAP2W LIME MAPLE
MAP2W TANG MAPLE



C 18 Single Tray Unit
Dimensions: W1030 x D453 x H617mm
MAP3W CYAN MAPLE
MAP3W RASP MAPLE
MAP3W LIME MAPLE
MAP3W TANG MAPLE



D 24 Single Tray Unit
Dimensions: W1030 x D453 x H789mm
MAP4W CYAN MAPLE
MAP4W RASP MAPLE
MAP4W LIME MAPLE
MAP4W TANG MAPLE



E Double & Single Combination Tray Unit
Dimensions: W1358 x D453 x H707mm
MAP4012 CYAN MAPLE
MAP4012 RASP MAPLE
MAP4012 LIME MAPLE
MAP4012 TANG MAPLE



F Double & Single Combination Tray Unit
Dimensions: W1358 x D453 x H835mm
MAP4016 CYAN MAPLE
MAP4016 RASP MAPLE
MAP4016 LIME MAPLE
MAP4016 TANG MAPLE



G Double & Single Combination Tray Unit
Dimensions: W1030 x D453 x H1210mm
MAP4018 CYAN MAPLE
MAP4018 RASP MAPLE
MAP4018 LIME MAPLE
MAP4018 TANG MAPLE



H 12 Quad Tray Unit
Dimensions: W1358 x D453 x H1067mm
MAP1015 CYAN MAPLE
MAP1015 RASP MAPLE
MAP1015 LIME MAPLE
MAP1015 TANG MAPLE



I 6 Single Tray Unit
Dimensions: W360 x D473 x H667mm
MAP9011



J 12 Single Tray Unit
Dimensions: W700 x D473 x H667mm
MAP9006



K 18 Single Tray Unit
Dimensions: W1030 x D473 x H667mm
MAP9005



L 24 Single Tray Unit
Dimensions: W1030 x D473 x H839mm
MAP9008



M 12 Variety Tray Unit
Dimensions: W1358 x D473 x H752mm
MEQ9009



N 8 Quad Tray Unit
Dimensions: W1358 x D473 x H790mm
MAP9007



O 12 Quad Tray Unit
Dimensions: W1358 x D473 x H1115mm
MAP9004



COLOURED EDGE TRAY STORAGE



Manufactured from 18mm FSC certified MFC beech with 2mm ABS edging. Tray units are supplied with corresponding trays and strong non-marking shatterproof nylon castors (two with locking facility). Each with a load capacity of 20kg. Hand built to BS EN 16121:2013 Level 2 British Standard and EU equivalent in respect of strength, durability and stability. Complete with a 5-year warranty.



A 6 Single Tray Unit complete with red edging, castors and red trays

Dimensions: W360 x D453 x H617mm

MEQ1WRE BEECH
MAP1WRE MAPLE



B 6 Single Tray Unit complete with blue edging, castors and blue trays

Dimensions: W360 x D453 x H617mm

MEQ1WBE BEECH
MAP1WBE MAPLE



C 6 Single Tray Unit complete with green edging, castors and green trays

Dimensions: W360 x D453 x H617mm

MEQ1WGE BEECH
MAP1WGE MAPLE



D 6 Single Tray Unit complete with yellow edging, castors and yellow trays

Dimensions: W360 x D453 x H617mm

MEQ1WYE BEECH
MAP1WYE MAPLE



E 6 Single Tray Unit complete with tangerine edging, castors and tangerine trays

Dimensions: W360 x D453 x H617mm

MEQ1WOE BEECH
MAP1WOE MAPLE



F 6 Single Tray Unit complete with lime edging, castors and lime trays

Dimensions: W360 x D453 x H617mm

MEQ1WLE BEECH
MAP1WLE MAPLE



G 6 Single Tray Unit complete with metal blue edging, castors and metal blue trays

Dimensions: W360 x D453 x H617mm

MEQ1WSE BEECH
MAP1WSE MAPLE



H 6 Single Tray Unit complete with dark grey edging, castors and light grey trays

Dimensions: W360 x D453 x H617mm

MEQ1WDGE BEECH
MAP1WDGE MAPLE



I 6 Single Tray Unit complete with cyan edging, castors and cyan trays

Dimensions: W360 x D453 x H617mm

MEQ1WCE BEECH
MAP1WCE MAPLE



J 6 Single Tray Unit complete with purple edging, castors and purple trays

Dimensions: W360 x D453 x H617mm

MEQ1WPE BEECH
MAP1WPE MAPLE



COLOURED EDGE TRAY STORAGE



K 12 Single Tray Unit complete with red edging, castors and red trays

Dimensions: W700 x D453 x H617mm

MEQ2WRE BEECH
MAP2WRE MAPLE



L 12 Single Tray Unit complete with blue edging, castors and blue trays

Dimensions: W700 x D453 x H617mm

MEQ2WBE BEECH
MAP2WBE MAPLE



M 12 Single Tray Unit complete with green edging, castors and green trays

Dimensions: W700 x D453 x H617mm

MEQ2WGE BEECH
MAP2WGE MAPLE



N 12 Single Tray Unit complete with yellow edging, castors and yellow trays

Dimensions: W360 x D453 x H617mm

MEQ2WYE BEECH
MAP2WYE MAPLE



O 12 Single Tray Unit complete with tangerine edging, castors and tangerine trays

Dimensions: W700 x D453 x H617mm

MEQ2WOE BEECH
MAP2WOE MAPLE



P 12 Single Tray Unit complete with lime edging, castors and lime trays

Dimensions: W700 x D453 x H617mm

MEQ2WLE BEECH
MAP2WLE MAPLE



Q 12 Single Tray Unit complete with metal blue edging, castors and metal blue trays

Dimensions: W700 x D453 x H617mm

MEQ2WSE BEECH
MAP2WSE MAPLE



R 12 Single Tray Unit complete with dark grey edging, castors and light grey trays

Dimensions: W700 x D453 x H617mm

MEQ2WDGE BEECH
MAP2WDGE MAPLE



S 12 Single Tray Unit complete with cyan edging, castors and cyan trays

Dimensions: W700 x D453 x H617mm

MEQ2WCE BEECH
MAP2WCE MAPLE



T 12 Single Tray Unit complete with purple edging, castors and purple trays

Dimensions: W700 x D453 x H617mm

MEQ2WPE BEECH
MAP2WPE MAPLE

Wood Finish



Coloured Edge





A 18 Single Tray Unit complete with red edging, castors and red trays

Dimensions: W1030 x D453 x H617mm

MEQ3WRE	BEECH
MAP3WRE	MAPLE



B 18 Single Tray Unit complete with blue edging, castors and blue trays

Dimensions: W1030 x D453 x H617mm

MEQ3WBE	BEECH
MAP3WBE	MAPLE



C 18 Single Tray Unit complete with green edging, castors and green trays

Dimensions: W1030 x D453 x H617mm

MEQ3WGE	BEECH
MAP3WGE	MAPLE



D 18 Single Tray Unit complete with yellow edging, castors and yellow trays

Dimensions: W1030 x D453 x H617mm

MEQ3WYE	BEECH
MAP3WYE	MAPLE



E 18 Single Tray Unit complete with tangerine edging, castors and tangerine trays

Dimensions: W1030 x D453 x H617mm

MEQ3WOE	BEECH
MAP3WOE	MAPLE



F 18 Single Tray Unit complete with lime edging, castors and lime trays

Dimensions: W1030 x D453 x H617mm

MEQ3WLE	BEECH
MAP3WLE	MAPLE



G 18 Single Tray Unit complete with metal blue edging, castors and metal blue trays

Dimensions: W1030 x D453 x H617mm

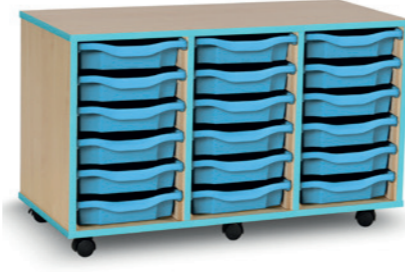
MEQ3WSE	BEECH
MAP3WSE	MAPLE



H 18 Single Tray Unit complete with dark grey edging, castors and light grey trays

Dimensions: W1030 x D453 x H617mm

MEQ3WDGE	BEECH
MAP3WDGE	MAPLE



I 18 Single Tray Unit complete with cyan edging, castors and cyan trays

Dimensions: W1030 x D453 x H617mm

MEQ3WCE	BEECH
MAP3WCE	MAPLE



J 18 Single Tray Unit complete with purple edging, castors and purple trays

Dimensions: W1030 x D453 x H617mm

MEQ3WPE	BEECH
MAP3WPE	MAPLE



K 24 Single Tray Unit complete with red edging, castors and red trays

Dimensions: W1030 x D453 x H789mm

MEQ4WRE	BEECH
MAP4WRE	MAPLE



L 24 Single Tray Unit complete with blue edging, castors and blue trays

Dimensions: W1030 x D453 x H789mm

MEQ4WBE	BEECH
MAP4WBE	MAPLE



M 24 Single Tray Unit complete with green edging, castors and green trays

Dimensions: W1030 x D453 x H789mm

MEQ4WGE	BEECH
MAP4WGE	MAPLE



N 24 Single Tray Unit complete with yellow edging, castors and yellow trays

Dimensions: W1030 x D453 x H789mm

MEQ4WYE	BEECH
MAP4WYE	MAPLE



O 24 Single Tray Unit complete with tangerine edging, castors and tangerine trays

Dimensions: W1030 x D453 x H789mm

MEQ4WOE	BEECH
MAP4WOE	MAPLE



P 24 Single Tray Unit complete with lime edging, castors and lime trays

Dimensions: W1030 x D453 x H789mm

MEQ4WLE	BEECH
MAP4WLE	MAPLE



Q 24 Single Tray Unit complete with metal blue edging, castors and metal blue trays

Dimensions: W1030 x D453 x H789mm

MEQ4WME	BEECH
MAP4WME	MAPLE



R 24 Single Tray Unit complete with dark grey edging, castors and light grey trays

Dimensions: W1030 x D453 x H789mm

MEQ4WDGE	BEECH
MAP4WDGE	MAPLE



S 24 Single Tray Unit complete with cyan edging, castors and cyan trays

Dimensions: W1030 x D453 x H789mm

MEQ4WCE	BEECH
MAP4WCE	MAPLE

Wood Finish



Coloured Edge



T 24 Single Tray Unit complete with purple edging, castors and purple trays

Dimensions: W1030 x D453 x H789mm

MEQ4WPE	BEECH
MAP4WPE	MAPLE



A 8 Quad Tray Unit complete with red edging, castors and red trays

Dimensions: W1342 x D453 x H739mm

MEQ1021RE	BEECH
MAP1021RE	MAPLE



B 8 Quad Tray Unit complete with blue edging, castors and blue trays

Dimensions: W1342 x D453 x H739mm

MEQ1021BE	BEECH
MAP1021BE	MAPLE



C 8 Quad Tray Unit complete with green edging, castors and green trays

Dimensions: W1342 x D453 x H739mm

MEQ1021GE	BEECH
MAP1021GE	MAPLE



D 8 Quad Tray Unit complete with yellow edging, castors and yellow trays

Dimensions: W1342 x D453 x H739mm

MEQ1021YE	BEECH
MAP1021YE	MAPLE



E 8 Quad Tray Unit complete with tangerine edging, castors and tangerine trays

Dimensions: W1342 x D453 x H739mm

MEQ1021OE	BEECH
MAP1021OE	MAPLE



F 8 Quad Tray Unit complete with lime edging, castors and lime trays

Dimensions: W1342 x D453 x H739mm

MEQ1021LE	BEECH
MAP1021LE	MAPLE



G 8 Quad Tray Unit complete with metal blue edging, castors and metal blue trays

Dimensions: W1342 x D453 x H739mm

MEQ1021SE	BEECH
MAP1021SE	MAPLE



H 8 Quad Tray Unit complete with dark grey edging, castors and light grey trays

Dimensions: W1342 x D453 x H739mm

MEQ1021DGE	BEECH
MAP1021DGE	MAPLE



I 8 Quad Tray Unit complete with cyan edging, castors and cyan trays

Dimensions: W1342 x D453 x H739mm

MEQ1021CE	BEECH
MAP1021CE	MAPLE



J 8 Quad Tray Unit complete with purple edging, castors and purple trays

Dimensions: W1342x D453 x H739mm

MEQ1021PE	BEECH
MAP1021PE	MAPLE



K 12 Quad Tray Unit complete with red edging, castors and red trays

Dimensions: W1358 x D453 x H1067mm

MEQ1015RE	BEECH
MAP1015RE	MAPLE



L 12 Quad Tray Unit complete with blue edging, castors and blue trays

Dimensions: W1358 x D453 x H1067mm

MEQ1015BE	BEECH
MAP1015BE	MAPLE



M 12 Quad Tray Unit complete with green edging, castors and green trays

Dimensions: W1358 x D453 x H1067mm

MEQ1015GE	BEECH
MAP1015GE	MAPLE



N 12 Quad Tray Unit complete with yellow edging, castors and yellow trays

Dimensions: W1358 x D453 x H1067mm

MEQ1015YE	BEECH
MAP1015YE	MAPLE



O 12 Quad Tray Unit complete with tangerine edging, castors and tangerine trays

Dimensions: W1358 x D453 x H1067mm

MEQ1015OE	BEECH
MAP1015OE	MAPLE



P 12 Quad Tray Unit complete with lime edging, castors and lime trays

Dimensions: W1358 x D453 x H1067mm

MEQ1015LE	BEECH
MAP1015LE	MAPLE



Q 12 Quad Tray Unit complete with metal blue edging, castors and metal blue trays

Dimensions: W1358 x D453 x H1067mm

MEQ1015SE	BEECH
MAP1015SE	MAPLE



R 12 Quad Tray Unit complete with dark grey edging, castors and light grey trays

Dimensions: W1358 x D453 x H1067mm

MEQ1015DGE	BEECH
MAP1015DGE	MAPLE



S 12 Quad Tray Unit complete with cyan edging, castors and cyan trays

Dimensions: W1358 x D453 x H1067mm

MEQ1015CE	BEECH
MAP1015CE	MAPLE



T 12 Quad Tray Unit complete with purple edging, castors and purple trays

Dimensions: W1358 x D453 x H1067mm

MEQ1015PE	BEECH
MAP1015PE	MAPLE

Wood Finish



Coloured Edge



THE WHITE RANGE TRAY STORAGE



Manufactured from 18mm FSC certified MFC beech with 2mm ABS edging. Tray units are supplied with corresponding trays and strong non-marking shatterproof nylon castors (two with locking facility). Each with a load capacity of 20kg. Hand built to BS EN 16121:2013 Level 2 British Standard and EU equivalent in respect of strength, durability and stability. Complete with a 5-year warranty.



A White 4 Quad Tray Unit
Dimensions: W700 x D453 x H739mm
WHI04J

WHITE

B White 6 Quad Tray Unit
Dimensions: W1030 x D453 x H739mm
WHI106Z

WHITE

C White 8 Quad Tray Unit
Dimensions: W1342 x D453 x H739mm
WHI1021

WHITE



D White 12 Quad Tray Unit
Dimensions: W1358 x D453 x H1067mm
WHI015

WHITE

E White 12 Triple Tray Unit
Dimensions: W1342 x D453 x H857mm
WHI3112

WHITE

F White 16 Triple Tray Unit
Dimensions: W1342 x D453 x H1115mm
WHI3116

WHITE



THE WHITE RANGE TRAY STORAGE



G White 12 Double Tray Unit (Horizontal)
Dimensions: W1358 x D453 x H707mm
WHI4012NL

WHITE



H White 12 Double Tray Unit (Vertical)
Dimensions: W1030 x D453 x H835mm
WHI4020NL

WHITE



I White 16 Double Tray Unit
Dimensions: W1358 x D453 x H835mm
WHI4016NL

WHITE



J White 18 Double Tray Unit
Dimensions: W1030 x D453 x H1210mm
WHI4018NL

WHITE



K White 8 Double & 6 Triple Tray Unit
Dimensions: W1358 x D453 x H842mm
WHI5030

WHITE



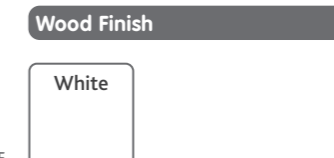
L White 16 Variety Tray Unit
Dimensions: W1358 x D453 x H967mm
WHI1116

WHITE



M White 12 Variety Tray Unit
Dimensions: W1358 x D453 x H707mm
WHI1031

WHITE





The Monarch Premium™ Range provides a sleek, fitted furniture look from individual pieces. This range is available in contemporary White and Light Grey finishes where vibrant trays can run smoothly on plastic Monarch™ runners. Manufactured from 18mm FSC certified white and grey MFC with 2mm ABS edging. Hand built to BS EN 16121:2013 Level 2 British Standard and EU equivalent in respect of strength, durability and stability. Complete with a 5-year warranty.



A 6 Single Tray Unit
Dimensions: W363 x D475 x H617mm
[PRM1W WHITE PL](#) PLINTH



B 8 Single Tray Unit
Dimensions: W363 x D475 x H789mm
[PRM8H WHITE PL](#) PLINTH



C 12 Single Tray Unit
Dimensions: W704 x D475 x H617mm
[PRM2W WHITE PL](#) PLINTH



D 16 Single Tray Unit
Dimensions: W704 x D475 x H789mm
[PRM16 WHITE PL](#) PLINTH



E 18 Single Tray Unit
Dimensions: W1045 x D475 x H789mm
[PRM3W WHITE PL](#) PLINTH



F 24 Single Tray Unit
Dimensions: W1045 x D475 x H789mm
[PRM4W WHITE PL](#) PLINTH



G 6 Single Tray Unit & 2 adjustable shelves
Dimensions: W1045 x D475 x H617mm
[PRM6/2S WHITE PL](#) PLINTH



H 8 Single Tray Unit & 2 adjustable shelves
Dimensions: W1045 x D475 x H789mm
[PRM8/2S WHITE PL](#) PLINTH



I 6 Single Tray Unit
Dimensions: W363 x D475 x H617mm
[PRM1W LIGHT GREY PL](#) PLINTH



J 8 Single Tray Unit
Dimensions: W363 x D475 x H789mm
[PRM8H LIGHT GREY PL](#) PLINTH



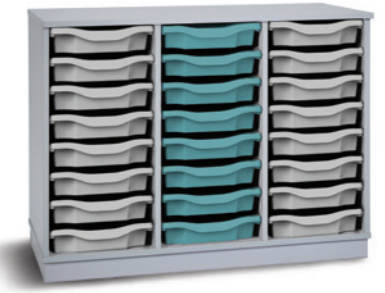
K 12 Single Tray Unit
Dimensions: W704 x D475 x H617mm
[PRM2W LIGHT GREY PL](#) PLINTH



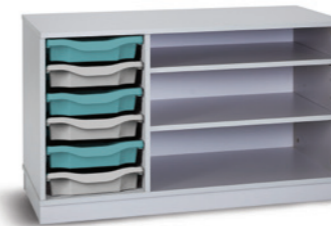
L 16 Single Tray Unit
Dimensions: W704 x D475 x H789mm
[PRM16 LIGHT GREY PL](#) PLINTH



M 18 Single Tray Unit
Dimensions: W1045 x D475 x H789mm
[PRM3W LIGHT GREY PL](#) PLINTH



N 24 Single Tray Unit
Dimensions: W1045 x D475 x H789mm
[PRM4W LIGHT GREY PL](#) PLINTH



O 6 Single Tray Unit & 2 adjustable shelves
Dimensions: W1045 x D475 x H617mm
[PRM6/2S LIGHT GREY PL](#) PLINTH



P 8 Single Tray Unit & 2 adjustable shelves
Dimensions: W1045 x D475 x H789mm
[PRM8/2S LIGHT GREY PL](#) PLINTH



A 6 Single Tray Unit

Dimensions: W363 x D475 x H617mm
PRM1W WHITE PLWD

PLINTH & DOOR



B 8 Single Tray Unit

Dimensions: W363 x D475 x H789mm
PRM8H WHITE PLWD

PLINTH & DOOR



C 12 Single Tray Unit

Dimensions: W704 x D475 x H617mm
PRM2W WHITE PLWD

PLINTH & DOORS



J 6 Single Tray Unit

Dimensions: W363 x D475 x H617mm
PRM1W LIGHT GREY PLWD

PLINTH & DOOR



K 8 Single Tray Unit

Dimensions: W363 x D475 x H789mm
PRM8H LIGHT GREY PLWD

PLINTH & DOOR



L 12 Single Tray Unit

Dimensions: W704 x D475 x H617mm
PRM2W LIGHT GREY PLWD

PLINTH & DOORS



D 16 Single Tray Unit

Dimensions: W704 x D475 x H789mm
PRM16 WHITE PLWD

PLINTH & DOORS



E 18 Single Tray Unit

Dimensions: W1045 x D475 x H789mm
PRM3W WHITE PLWD

PLINTH & DOORS



F 24 Single Tray Unit

Dimensions: W1045 x D475 x H789mm
PRM4W WHITE PLWD

PLINTH & DOORS



M 16 Single Tray Unit

Dimensions: W704 x D475 x H789mm
PRM16 LIGHT GREY PLWD

PLINTH & DOORS



N 18 Single Tray Unit

Dimensions: W1045 x D475 x H789mm
PRM3W LIGHT GREY PLWD

PLINTH & DOORS



O 24 Single Tray Unit

Dimensions: W1045 x D475 x H789mm
PRM4W LIGHT GREY PLWD

PLINTH & DOORS



G 6 Single Tray Unit & 2 adjustable shelves

Dimensions: W1045 x D475 x H617mm
PRM6/2S WHITE PLWD

PLINTH & DOORS



H 8 Single Tray Unit & 2 adjustable shelves

Dimensions: W1045 x D475 x H789mm
PRM8/2S WHITE PLWD

PLINTH & DOORS



I 21 Single Tray Storage Cupboard with 2 adjustable shelves

Dimensions: W1045 x D475 x H1818mm
PRM21C WHITE PLWD

PLINTH & DOORS



P 6 Single Tray Unit & 2 adjustable shelves

Dimensions: W1045 x D475 x H617mm
PRM6/2S LIGHT GREY PLWD

PLINTH & DOORS



Q 8 Single Tray Unit & 2 adjustable shelves

Dimensions: W1045 x D475 x H789mm
PRM8/2S LIGHT GREY PLWD

PLINTH & DOORS



R 21 Single Tray Storage Cupboard with 2 adjustable shelves

Dimensions: W1045 x D475 x H1818mm
PRM21C LIGHT GREY PLWD

PLINTH & DOORS

TRAY STORAGE

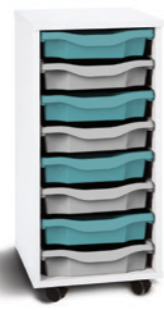
TRAY STORAGE



A 6 Single Tray Unit

Dimensions: W363 x D475 x H617mm
PRM1W WHITE

CASTORS



B 8 Single Tray Unit

Dimensions: W363 x D475 x H789mm
PRM8H WHITE

CASTORS



C 12 Single Tray Unit

Dimensions: W704 x D475 x H617mm
PRM2W WHITE

CASTORS



I 6 Single Tray Unit

Dimensions: W363 x D475 x H617mm
PRM1W LIGHT GREY

CASTORS



J 8 Single Tray Unit

Dimensions: W363 x D475 x H789mm
PRM8H LIGHT GREY

CASTORS



K 12 Single Tray Unit

Dimensions: W704 x D475 x H617mm
PRM2W LIGHT GREY

CASTORS



D 16 Single Tray Unit

Dimensions: W704 x D475 x H789mm
PRM16 WHITE

CASTORS



E 18 Single Tray Unit

Dimensions: W1045 x D475 x H789mm
PRM3W WHITE

CASTORS



F 24 Single Tray Unit

Dimensions: W1045 x D475 x H789mm
PRM4W WHITE

CASTORS



L 16 Single Tray Unit

Dimensions: W704 x D475 x H789mm
PRM16 LIGHT GREY

CASTORS



M 18 Single Tray Unit

Dimensions: W1045 x D475 x H789mm
PRM3W LIGHT GREY

CASTORS



N 24 Single Tray Unit

Dimensions: W1045 x D475 x H789mm
PRM4W LIGHT GREY

CASTORS



G 6 Single Tray Unit & 2 adjustable shelves

Dimensions: W1045 x D475 x H617mm
PRM6/2S WHITE

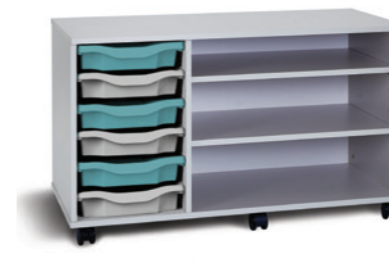
CASTORS



H 8 Single Tray Unit & 2 adjustable shelves

Dimensions: W1045 x D475 x H789mm
PRM8/2S WHITE

CASTORS



O 6 Single Tray Unit & 2 adjustable shelves

Dimensions: W1045 x D475 x H617mm
PRM6/2S LIGHT GREY

CASTORS



P 8 Single Tray Unit & 2 adjustable shelves

Dimensions: W1045 x D475 x H789mm
PRM8/2S LIGHT GREY

CASTORS



A 6 Single Tray Unit

Dimensions: W363 x D475 x H617mm
PRM1W WHITE CFWD

CASTORS & DOOR



B 8 Single Tray Unit

Dimensions: W363 x D475 x H789mm
PRM8H WHITE CFWD

CASTORS & DOOR



C 12 Single Tray Unit

Dimensions: W704 x D475 x H617mm
PRM2W WHITE CFWD

CASTORS & DOORS



I 6 Single Tray Unit

Dimensions: W363 x D475 x H617mm
PRM1W LIGHT GREY CFWD

CASTORS & DOOR



J 8 Single Tray Unit

Dimensions: W363 x D475 x H789mm
PRM8H LIGHT GREY CFWD

CASTORS & DOOR



K 12 Single Tray Unit

Dimensions: W704 x D475 x H617mm
PRM2W LIGHT GREY CFWD

CASTORS & DOORS



D 16 Single Tray Unit

Dimensions: W704 x D475 x H789mm
PRM16 WHITE CFWD

CASTORS & DOORS



E 18 Single Tray Unit

Dimensions: W1045 x D475 x H789mm
PRM3W WHITE CFWD

CASTORS & DOORS



F 24 Single Tray Unit

Dimensions: W1045 x D475 x H789mm
PRM4W WHITE CFWD

CASTORS & DOORS



L 16 Single Tray Unit

Dimensions: W704 x D475 x H789mm
PRM16 LIGHT GREY CFWD

CASTORS & DOORS



M 18 Single Tray Unit

Dimensions: W1045 x D475 x H789mm
PRM3W LIGHT GREY CFWD

CASTORS & DOORS



N 24 Single Tray Unit

Dimensions: W1045 x D475 x H789mm
PRM4W LIGHT GREY CFWD

CASTORS & DOORS



G 6 Single Tray Unit & 2 adjustable shelves

Dimensions: W1045 x D475 x H617mm
PRM6/2S WHITE CFWD

CASTORS & DOORS



H 8 Single Tray Unit & 2 adjustable shelves

Dimensions: W1045 x D475 x H789mm
PRM8/2S WHITE CFWD

CASTORS & DOORS



O 6 Single Tray Unit & 2 adjustable shelves

Dimensions: W1045 x D475 x H617mm
PRM6/2S LIGHT GREY CFWD

CASTORS & DOORS



P 8 Single Tray Unit & 2 adjustable shelves

Dimensions: W1045 x D475 x H789mm
PRM8/2S LIGHT GREY CFWD

CASTORS & DOORS



A range of hard-wearing, high-quality storage units designed and manufactured to meet the demands of the modern classroom. Manufactured from 18mm FSC certified MFC in either beech or maple with 2mm ABS edging. Delivered fully assembled with Monarch Trays™ and supplied with connecting pins for added safety. Supplied with easy to fit castors so units can be mobile or static. Hand built to BS EN 16121:2013 Level 2 British Standard and EU equivalent in respect of strength, durability and stability. Complete with a 5-year warranty. Please be aware that if units are stacked over 2 meters, additional wall fittings will be required (not supplied).



A Allsorts Stackable™ Combination Unit 1

Dimensions: W1730 x D453 x H1620mm - without castors H1490mm

SACOM1BEE	BEECH
SACOM1MAP	MAPLE
SACOM1WHI	WHITE
SACOM1GRY	GREY



B Allsorts Stackable™ Combination Unit 2

Dimensions: W1730 x D453 x H1620mm - without castors H1490mm

SACOM2BEE	BEECH
SACOM2MAP	MAPLE
SACOM2WHI	WHITE
SACOM2GRY	GREY



C Allsorts Stackable™ Combination Unit 3

Dimensions: W2030 x D453 x H1620mm - without castors H1490mm

SACOM3BEE	BEECH
SACOM3MAP	MAPLE
SACOM3WHI	WHITE
SACOM3GRY	GREY



D Allsorts Stackable™ Combination Unit 4

Dimensions: W1400 x D453 x H1620mm - without castors H1490mm

SACOM4BEE	BEECH
SACOM4MAP	MAPLE
SACOM4WHI	WHITE
SACOM4GRY	GREY



E Allsorts Stackable™ Combination Unit 5

Dimensions: W1730 x D453 x H1620mm - without castors H1490mm

SACOM5BEE	BEECH
SACOM5MAP	MAPLE
SACOM5WHI	WHITE
SACOM5GRY	GREY



F Allsorts Stackable™ 16 Single Tray Unit

Dimensions: W700 x D453 x H810mm
without castors H745mm

SA16S	BEECH
MAPSA16S	MAPLE



G Allsorts Stackable™ 24 Single Tray Unit

Dimensions: W1030 x D453 x H810mm
without castors H745mm

SA24S	BEECH
MAPSA24S	MAPLE



H Allsorts Stackable™ 8 Double Tray Unit

Dimensions: W700 x D453 x H810mm
without castors H745mm

SA08D	BEECH
MAPSA08D	MAPLE



I Allsorts Stackable™ 12 Double Tray Unit

Dimensions: W1030 x D453 x H810mm
without castors H745mm

SA12D	BEECH
MAPSA12D	MAPLE



J Allsorts Stackable™ 4 Quad Tray Unit

Dimensions: W700 x D453 x H810mm
without castors H745mm

SA04J	BEECH
MAPSA04J	MAPLE



K Allsorts Stackable™ 6 Quad Tray Unit

Dimensions: W1030 x D453 x H810mm
without castors H745mm

SA06J	BEECH
MAPSA06J	MAPLE



L Allsorts Stackable™ Unit with 4 Compartments

Dimensions: W700 x D453 x H810mm
without castors H745mm

SA04E	BEECH
MAPSA04E	MAPLE
*WHISA04E	WHITE

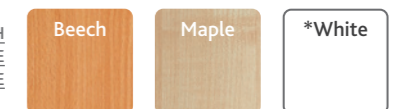


M Allsorts Stackable™ Unit with 1 Shelf

Dimensions: W1030 x D453 x H810mm
without castors H745mm

SA1SH	BEECH
MAPSA1SH	MAPLE
*WHISA1SH	WHITE

Wood Finish





F Allsorts™ 16 Single Tray Unit
 Dimensions: W700 x D453 x H810mm
 MEQ16S BEECH
 MAP16S MAPLE



G Allsorts™ 24 Single Tray Unit
 Dimensions: W1030 x D453 x H810mm
 MEQ24S BEECH
 MAP24S MAPLE



H Allsorts™ 8 Double Tray Unit
 Dimensions: W700 x D453 x H810mm
 MEQ08D BEECH
 MAP08D MAPLE



I Allsorts™ 12 Double Tray Unit
 Dimensions: W1030 x D453 x H810mm
 MEQ12D BEECH
 MAP12D MAPLE



J Allsorts™ 4 Quad Tray Unit
 Dimensions: W700 x D453 x H810mm
 MEQ04J BEECH
 MAP04J MAPLE



K Allsorts™ 6 Quad Tray Unit
 Dimensions: W1030 x D453 x H810mm
 MEQ06J BEECH
 MAP06J MAPLE



L Allsorts Stackable™ Unit with 4 Compartments
 Dimensions: W700 x D453 x H810mm
 MEQ04E BEECH
 MAP04E MAPLE
 *WHI04E WHITE



M Allsorts Stackable™ Unit with 1 Shelf
 Dimensions: W1030 x D453 x H810mm
 MEQ1SH BEECH
 MAP1SH MAPLE
 *WHI1SH WHITE

Wood Finish

Beech	Maple	*White
-------	-------	--------



Our cupboards are manufactured from 18mm FSC certified Beech or Maple MFC with 2mm ABS edging. Supplied fully assembled with lockable doors and adjustable shelves where applicable.



A 24 Single Tray Storage Cupboard
 Dimensions: W1022 x D485 x H1468mm
 MEQ24 Half Doors & Adjustable Shelves BEECH
 MAP24 Half Doors & Adjustable Shelves MAPLE



B 24 Single Tray Storage Cupboard
 Dimensions: W1022 x D485 x H1468mm
 MEQ24C Full Doors & Adjustable Shelves BEECH
 MAP24C Full Doors & Adjustable Shelves MAPLE



B 21 Single Tray Storage Cupboard
 Dimensions: W1022 x D485 x H1810mm
 MEQ21C Full Doors BEECH
 MAP21C Full Doors MAPLE



B 21 Single Tray Storage Cupboard
 Dimensions: W1022 x D485 x H1810mm
 MEQ20C/SS Full Doors BEECH
 MAP20C/SS Full Doors MAPLE



B 48 Single Tray Storage Cupboard
 Dimensions: W1026 x D485 x H1468mm
 MEQ48C Full Doors BEECH
 MAP48C Full Doors MAPLE



B 60 Single Tray Storage Cupboard
 Dimensions: W1022 x D485 x H1810mm
 MEQ60C Full Doors BEECH
 MAP60C Full Doors MAPLE



B 48 Single Tray Storage Cupboard
 Dimensions: W1026 x D485 x H1468mm
 MEQ48ND Full Doors BEECH
 MAP48ND Full Doors MAPLE



B 60 Single Tray Storage Cupboard
 Dimensions: W1022 x D485 x H1810mm
 MEQ60ND Full Doors BEECH
 MAP60ND Full Doors MAPLE

Wood Finish

Beech	Maple
-------	-------



Supplied fully assembled and manufactured from 25 x 25mm ERW steel tube, fully welded with an epoxy powder coated finish. Complete with grey MFC top. Frames are fitted with heavy duty feet and our trolleys are fitted with heavy duty castors (two with locking facility). Each with a load capacity of 60kg. Hand built to BS EN 16121:2013 Level 2 British Standard and EU equivalent in respect of strength, durability and stability. Complete with a 5-year warranty.



A 6 Single Tray Trolley
Dimensions: W390 x D430 x H674mm
EF8803CGREY



B 12 Single Tray Trolley
Dimensions: W710 x D430 x H674mm
EF8802CGREY



C 18 Single Tray Trolley
Dimensions: W1050 x D430 x H674mm
EF8801CGREY



D 24 Single Tray Trolley
Dimensions: W1050 x D430 x H850mm
EF8804GREY



E 6 Single Tray Frame
Dimensions: W390 x D430 x H850mm
EF8810GREY



F 16 Single Tray Frame
Dimensions: W710 x D430 x H850mm
EF8811GREY



G 24 Single Tray Frame
Dimensions: W1050 x D430 x H850mm
EF8812GREY



H 30 Single Tray Frame
Dimensions: W710 x D430 x H1510mm
EF8025GREY



I 45 Single Tray Frame
Dimensions: W1050 x D430 x H1510mm
EF8026GREY



J 38 Single Tray Frame
Dimensions: W710 x D430 x H1835mm
EF8027GREY



K 57 Single Tray Frame
Dimensions: W1050 x D430 x H1835mm
EF8028GREY

Metal Finish





Supplied fully assembled and manufactured from 25 x 25mm ERW steel tube, fully welded with an epoxy powder coated finish. The recessed tops are removable with open corners for easy cleaning. Frames are fitted with heavy duty feet and our trolleys are fitted with heavy duty castors (two with locking facility). Each with a load capacity of 60kg. Hand built to BS EN 16121:2013 Level 2 British Standard and EU equivalent in respect of strength, durability and stability. Complete with a 5-year warranty.

Tall Frames – Triple Column - 1820mm High



A 57 Single Tray Storage Frame
Dimensions: W1050 x D430 x H1820mm
EF8028CGRYGRYMET



B 33 Tray Combination Storage Frame
Dimensions: W1050 x D430 x H1820mm
EF8028CGRYGRYMETCC

Tall Frames – Double Column - 1820mm High



C 38 Single Tray Storage Frame
Dimensions: W710 x D430 x H1820mm
EF8027CGRYGRYMET



D 22 Tray Combination Storage Frame
Dimensions: W710 x D430 x H1820mm
EF8027CGRYGRYMETCD

Mid Height Frames – Triple Column - 1495mm High



E 45 Single Tray Storage Frame
Dimensions: W1050 x D430 x H1495mm
EF8026CGRYGRYMET



F 33 Tray Combination Storage Frame
Dimensions: W1050 x D430 x H1495mm
EF8026CGRYGRYMETCG

Mid Height Frames – Double Column - 1495mm High



G 30 Single Storage Frame
Dimensions: W1050 x D430 x H1495mm
EF8025CGRYGRYMET



H 18 Tray Combination Storage Frame
Dimensions: W1050 x D430 x H1495mm
EF8025CGRYGRYMETCE

Low Frames - 830mm High



I 8 Single Tray Storage Frame
Dimensions: W390 x D430 x H830mm
EF8810CGRYGRYMET



J 16 Single Tray Storage Frame
Dimensions: W710 x D430 x H830mm
EF8811CGRYGRYMET



K 24 Single Tray Storage Frame
Dimensions: W1050 x D430 x H830mm
EF8812CGRYGRYMET

Trolleys - 655mm High



L 6 Single Tray Storage Trolley
Dimensions: W390 x D430 x H655mm
EF8803CGRYGRYMET



M 12 Single Tray Storage Trolley
Dimensions: W710 x D430 x H655mm
EF8802CGRYGRYMET



N 18 Single Tray Storage Trolley
Dimensions: W1050 x D430 x H655mm
EF8801CGRYGRYMET



O 24 Single Tray Storage Trolley
Dimensions: W1050 x D430 x H830mm
EF8804CGRYGRYMET



Metal Finish

Light Grey

Dark Grey



Supplied fully assembled and manufactured from 25 x 25mm ERW steel tube, fully welded with an epoxy powder coated finish with Monarch Mircoprotect™. Complete with recessed metal top. Frames are fitted with heavy duty feet and our trolleys are fitted with heavy duty castors (two with locking facility). Each with a load capacity of 60kg. Hand built to BS EN 16121:2013 Level 2 British Standard and EU equivalent in respect of strength, durability and stability. Complete with a 5-year warranty.



A 6 Single Tray Trolley
Dimensions: W390 x D430 x H674mm
EF8803CWHIWHIMET AQUA



B 12 Single Tray Trolley
Dimensions: W710 x D430 x H674mm
EF8802CWHIWHIMET AQUA



C 18 Single Tray Trolley
Dimensions: W1050 x D430 x H674mm
EF8801CWHIWHIMET AQUA



D 24 Single Tray Trolley
Dimensions: W1050 x D430 x H850mm
EF8804CWHIWHIMET AQUA



E 8 Single Tray Frame
Dimensions: W390 x D430 x H850mm
EF8810CWHIWHIMET AQUA



F 16 Single Tray Frame
Dimensions: W710 x D430 x H850mm
EF8811CWHIWHIMET AQUA



G 24 Single Tray Frame
Dimensions: W1050 x D430 x H850mm
EF8812CWHIWHIMET AQUA



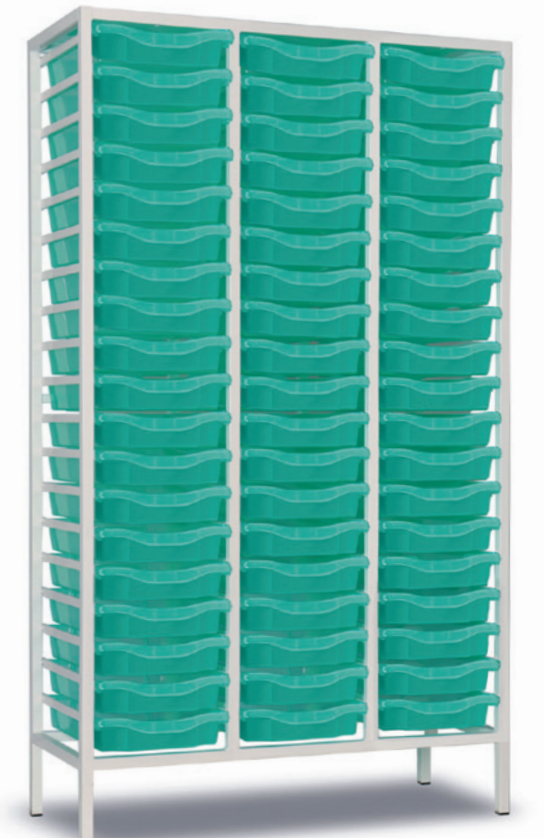
H 30 Single Tray Frame
Dimensions: W710 x D430 x H1510mm
EF8025CWHIWHIMET AQUA



I 45 Single Tray Frame
Dimensions: W1050 x D430 x H1510mm
EF8026CWHIWHIMET AQUA



J 38 Single Tray Frame
Dimensions: W710 x D430 x H1835mm
EF8027CWHIWHIMET AQUA



K 57 Single Tray Frame
Dimensions: W1050 x D430 x H1835mm
EF8028CWHIWHIMET AQUA



Supplied fully assembled and manufactured from 25 x 25mm ERW steel tube, fully welded with an epoxy powder coated finish with Monarch Microprotect™. Complete with recessed metal top. Frames are fitted with heavy duty feet and our trolleys are fitted with heavy duty castors (two with locking facility). Each with a load capacity of 60kg. Hand built to BS EN 16121:2013 Level 2 British Standard and EU equivalent in respect of strength, durability and stability. Complete with a 5-year warranty.



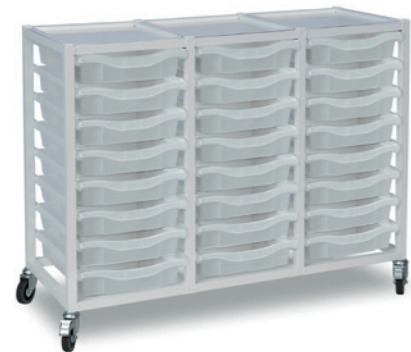
A 6 Single Tray Trolley
Dimensions: W390 x D430 x H674mm
EF8803CWHIWHIMET TRANS



B 12 Single Tray Trolley
Dimensions: W710 x D430 x H674mm
EF8802CWHIWHIMET TRANS



C 18 Single Tray Trolley
Dimensions: W1050 x D430 x H674mm
EF8801CWHIWHIMET TRANS



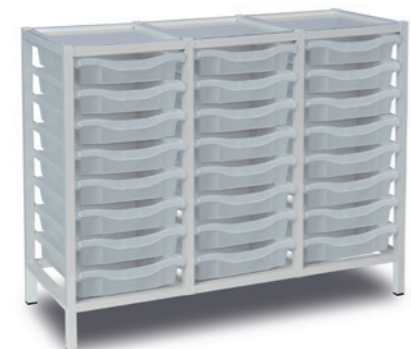
D 24 Single Tray Trolley
Dimensions: W1050 x D430 x H850mm
EF8804CWHIWHIMET TRANS



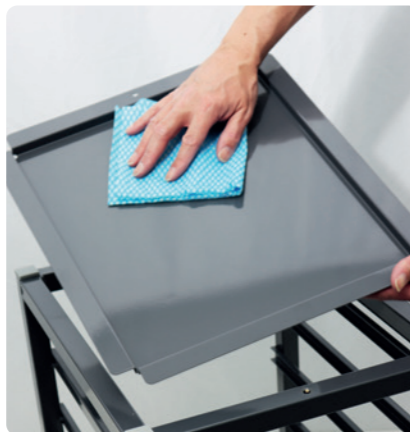
E 8 Single Tray Frame
Dimensions: W390 x D430 x H850mm
EF8810CWHIWHIMET TRANS



F 16 Single Tray Frame
Dimensions: W710 x D430 x H850mm
EF8811CWHIWHIMET TRANS

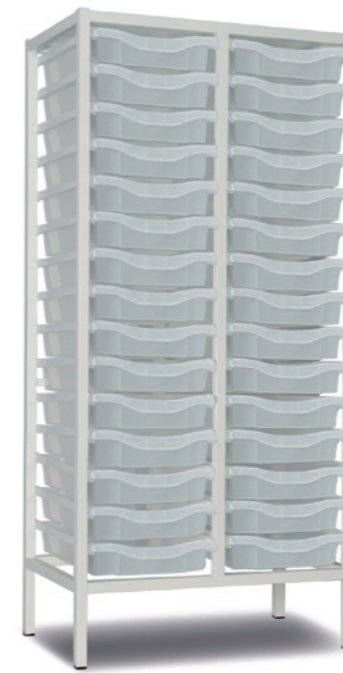


G 24 Single Tray Frame
Dimensions: W1050 x D430 x H850mm
EF8812CWHIWHIMET TRANS



Monarch Microprotect™

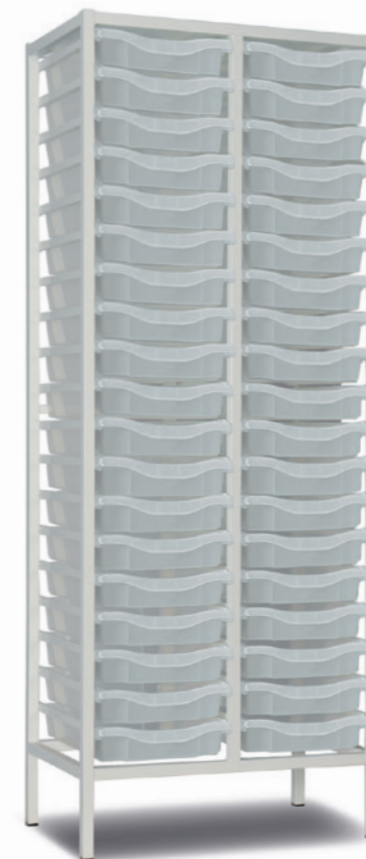
Monarch's antimicrobial system Monarch Microprotect™ prevents the growth of bacteria, biofilm, mould and other viruses by up to 99.99% for the lifetime of the product. It works continuously and effectively and over time there is no loss in antimicrobial performance.



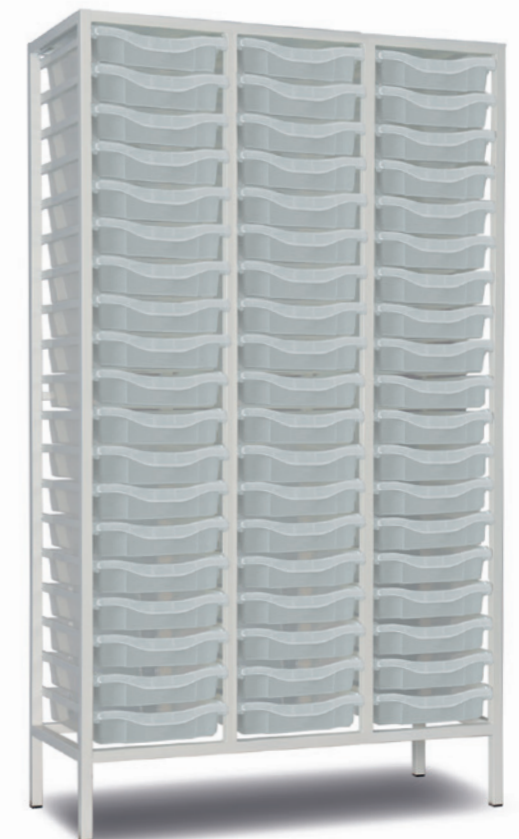
H 30 Single Tray Frame
Dimensions: W710 x D430 x H1510mm
EF8025CWHIWHIMET TRANS



I 45 Single Tray Frame
Dimensions: W1050 x D430 x H1510mm
EF8026CWHIWHIMET TRANS



J 38 Single Tray Frame
Dimensions: W710 x D430 x H1835mm
EF8027CWHIWHIMET TRANS



K 57 Single Tray Frame
Dimensions: W1050 x D430 x H1835mm
EF8028CWHIWHIMET TRANS



Early Years



Primary

Secondary



Stem



Prep Rooms



Office

Industrial



Medical



Our customers are always at the heart of our business. Our dedication and commitment to service and support is the reason we are recognised as a leader in our field.

Follow us on our journey...

- #mymonarchtray
- #monarchtray
- #teammonarch
- #educationalfurniture



monarchTM
education furniture

0115 982 1771
sales@monarchuk.com
monarchuk.com