





Operating at a very high level of performance, demonstrating well developed occupational health and safety management systems and culture, outstanding control of risk and very low levels of error, harm and loss.



Monarch Education Furniture is an official member of the British Education Suppliers Association (BESA). BESA is a trade association who work on behalf of their members to support UK-based companies that supply goods and services to the education sector.





Welcome to Monarch Medical™ Catalogue

For over 30 years we've been carving out a unique spot in the education furniture industry, with warm customer service and fantastic lead times that you won't find anywhere else. In our 96,000 square foot purpose-built factory in Nottingham, we manufacture a wide range of stock units and undertake bespoke projects to meet the complex needs of the education, healthcare, and public sector markets.

Our customers are always at the heart of our business and our dedication and commitment to service and support is the reason we are recognised as a leader in our field.



Follow us on our journey...



#teammonarch
#educationalfurniture
#mymonarchtray
#monarchtray

Environmentally Friendly

Did you know?

Our certified FSC MFC is manufactured in Chirk, Wales. 80% of the boards are recycled timber (a mix of hardwood & softwood coming from old furniture, pallets, cable reels).

The recycled content comes from the UK & the 20% non-recycled material is spruce/pine which is also grown in the UK. For every tree felled - two trees are planted.

Once our furniture reaches the end of its lifetime, around 100% of the unit can be recycled.

Factory

LED lighting in the factory and offices are each fitted with an individual PIR sensor so that they are only on when someone is active in that area. The dust extraction system is fully enclosed which returns the filtered air back into the factory to reduce heat loss.

Excess material from units damaged in transit will be returned to the factory for possible reuse. All cardboard, paper and plastic are compacted and recycled with a local recycler. All metal is separated and recycled locally and our supplier of degreasing chemicals is also licensed to collect our chemical waste. We are a registered waste carrier.

Our Biomass boiler can burn up to 5 tonnes...

of waste wood per week greatly reducing the amount of waste that is sent for recycling. The heat generated is piped to into our factory.



Quality

We offer exceptional build quality, hand finished and functionally safe for use within the rigours of a busy learning environment. We use high quality materials and components to ensure each unit is robust, rigid and sturdy. Each unit is constructed using 18mm FSC certified MFC, 2mm thick ABS edging and fitted together by cam and dowel construction.

We manufacture our metal range using 25 x 25mm ERW steel tube, fully welded with an epoxy powder coated finish.



Warranty & Safety

All of our products are hand built in the UK and are independently tested by FIRA to BS EN 16121:2013 Level 2 British Standard and EU equivalent in respect of strength, durability and stability. Complete with a 5-year warranty.

Warranty



Made in UK



Sustainable



Citation ISO Certification

Quality management

ISO 9001: 2015

Certificate No: 192762012

REGISTERED

Unwrap & Check Service™

With our famous **Unwrap & Check Service™** our driver will deliver your order to a nominated ground level reception point. All items are unpacked by our driver and checked by the customer for damages. All packaging is taken away by driver which is then recycled by our factory.



Sales Team

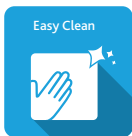
Our customers are always at the heart of our business and our dedication and commitment to service and support is the reason we are recognised as a leader in our field.

Contact our friendly team:

Tel: 0115 982 1771

Email: sales@monarchuk.com

MEDICAL STORAGE



Supplied fully assembled and manufactured from 25 x 25mm ERW steel tube, fully welded with an epoxy powder coated finish with Monarch Microprotect™. Complete with recessed metal top. Frames are fitted with heavy duty feet and our trolleys are fitted with heavy duty castors (two with locking facility). Each with a load capacity of 60kg. Hand built to BS EN 16121:2013 Level 2 British Standard and EU equivalent in respect of strength, durability and stability. Complete with a 5-year warranty.



A 6 Single Tray Trolley
 Dimensions: W390 x D430 x H674mm
 EF8803CWHIWHIMET AQUA



B 12 Single Tray Trolley
 Dimensions: W710 x D430 x H674mm
 EF8802CWHIWHIMET AQUA



C 18 Single Tray Trolley
 Dimensions: W1050 x D430 x H674mm
 EF8801CWHIWHIMET AQUA



D 24 Single Tray Trolley
 Dimensions: W1050 x D430 x H850mm
 EF8804CWHIWHIMET AQUA



E 8 Single Tray Frame
 Dimensions: W390 x D430 x H850mm
 EF8810CWHIWHIMET AQUA



F 16 Single Tray Frame
 Dimensions: W710 x D430 x H850mm
 EF8811CWHIWHIMET AQUA



G 24 Single Tray Frame
 Dimensions: W1050 x D430 x H850mm
 EF8812CWHIWHIMET AQUA



TRAY STORAGE



H 30 Single Tray Frame
Dimensions: W710 x D430 x H1510mm
[EF8025CWHIWHIMET AQUA](#)



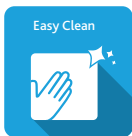
I 45 Single Tray Frame
Dimensions: W1050 x D430 x H1510mm
[EF8026CWHIWHIMET AQUA](#)



J 38 Single Tray Frame
Dimensions: W710 x D430 x H1835mm
[EF8027CWHIWHIMET AQUA](#)



K 57 Single Tray Frame
Dimensions: W1050 x D430 x H1835mm
[EF8028CWHIWHIMET AQUA](#)



Supplied fully assembled and manufactured from 25 x 25mm ERW steel tube, fully welded with an epoxy powder coated finish with Monarch Microprotect™*. Complete with recessed metal top. Frames are fitted with heavy duty feet and our trolleys are fitted with heavy duty castors (two with locking facility). Each with a load capacity of 60kg. Hand built to BS EN 16121:2013 Level 2 British Standard and EU equivalent in respect of strength, durability and stability. Complete with a 5-year warranty.



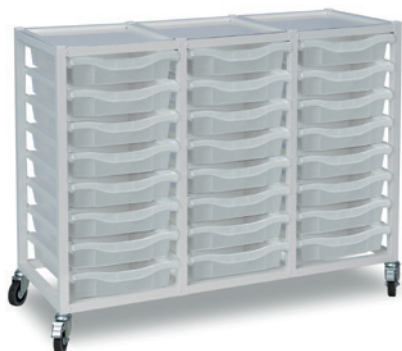
A 6 Single Tray Trolley
Dimensions: W390 x D430 x H674mm
EF8803CWHIWHIMET TRANS



B 12 Single Tray Trolley
Dimensions: W710 x D430 x H674mm
EF8802CWHIWHIMET TRANS



C 18 Single Tray Trolley
Dimensions: W1050 x D430 x H674mm
EF8801CWHIWHIMET TRANS



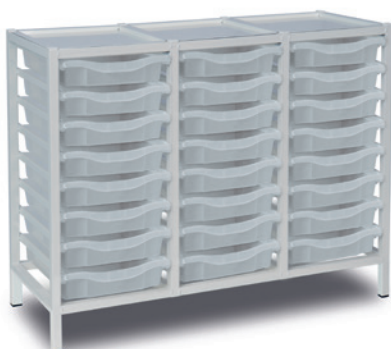
D 24 Single Tray Trolley
Dimensions: W1050 x D430 x H850mm
EF8804CWHIWHIMET TRANS



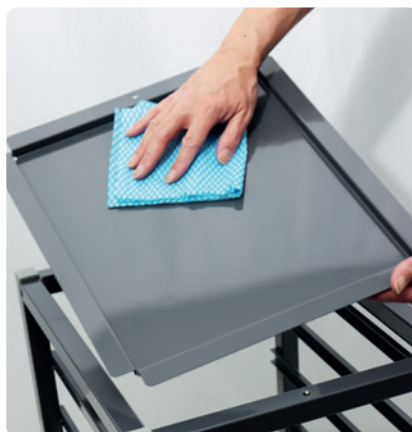
E 8 Single Tray Frame
Dimensions: W390 x D430 x H850mm
EF8810CWHIWHIMET TRANS



F 16 Single Tray Frame
Dimensions: W710 x D430 x H850mm
EF8811CWHIWHIMET TRANS



G 24 Single Tray Frame
Dimensions: W1050 x D430 x H850mm
EF8812CWHIWHIMET TRANS

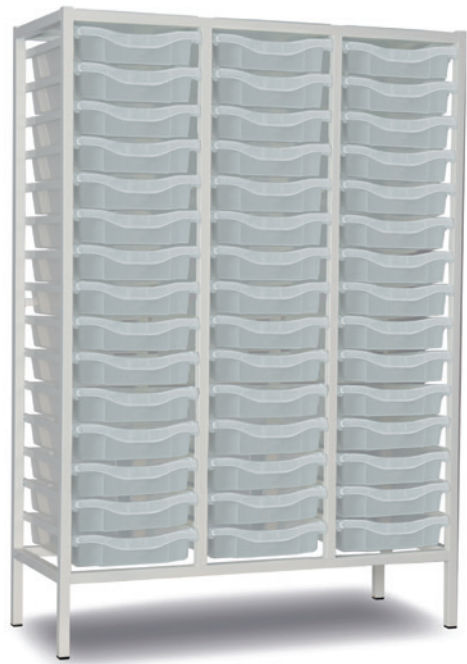


Monarch Microprotect™

Monarch's antimicrobial system Monarch Microprotect™ prevents the growth of bacteria, biofilm, mould and other viruses by up to 99.99% for the lifetime of the product. It works continuously and effectively and over time there is no loss in antimicrobial performance.



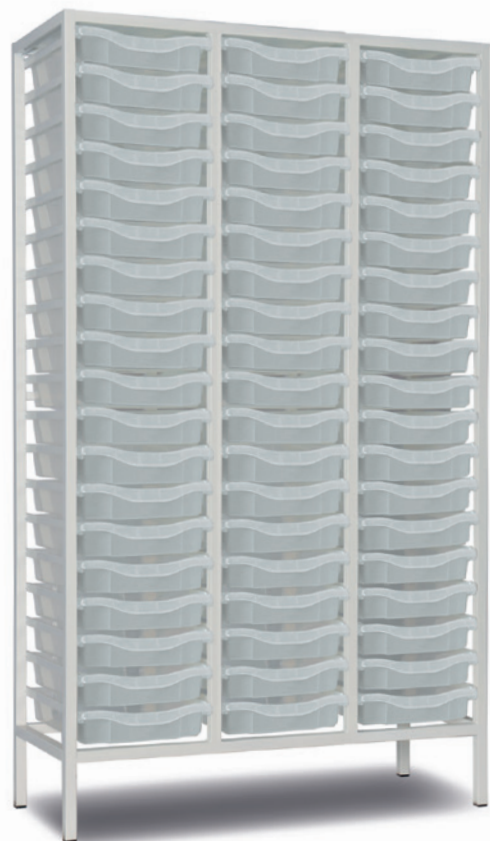
H 30 Single Tray Frame
Dimensions: W710 x D430 x H1510mm
[EF8025CWHIWHIMET TRANS](#)



I 45 Single Tray Frame
Dimensions: W1050 x D430 x H1510mm
[EF8026CWHIWHIMET TRANS](#)



J 38 Single Tray Frame
Dimensions: W710 x D430 x H1835mm
[EF8027CWHIWHIMET TRANS](#)



K 57 Single Tray Frame
Dimensions: W1050 x D430 x H1835mm
[EF8028CWHIWHIMET TRANS](#)



Early Years



Primary

Secondary



Stem



Prep Rooms



Office

Industrial



Medical



Our customers are always at the heart of our business. Our dedication and commitment to service and support is the reason we are recognised as a leader in our field.

Follow us on our journey...

- #mymonarchtray
- #monarchtray
- #teammonarch
- #educationalfurniture



0115 982 1771

sales@monarchuk.com | monarchuk.com

Nottingham Airport, Tollerton Lane, Tollerton,
Nottingham, NG12 4GA